



Update from the  
**NSF Ice Drilling Program (IDP)**

Mary Albert  
IDP Executive Director



[www.icedrill.org](http://www.icedrill.org)



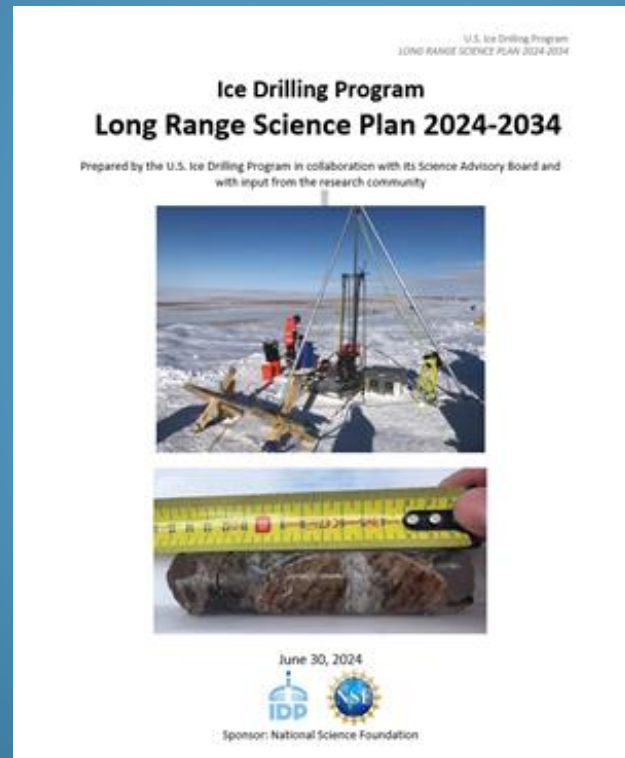
# NSF Ice Drilling Program



## Long Range Planning & Drilling For Multiple Fields of Science

### IDP Working Groups

- Ice core working group (ICWG)
- Englacial and subglacial science working group (ESAWG)



- Past Climate Change
- Ice Dynamics & Glacial History
- Subglacial Geology, Sediments & Ecosystems
- Ice as a Scientific Observatory

***Science planning drives IDP drill development & use***

**[www.icedrill.org](http://www.icedrill.org)**



# NSF Ice Drilling Program IDP long range planning example



## Englacial & Subglacial Access Working Group Science Planning Workshop

December 8, 2024 Alexandria VA



**Outcome: white papers on science for the coming decade**  
<https://icedrill.org/meetings/esawg-workshop-2024>



# IDP Drilling Highlight:



## IDP drilled the first 4.5 m bedrock core from beneath the Greenland Ice Sheet

**Agile Sub-Ice Geologic Drill (ASIG)**  
7.5 m core under 502 m of ice



IDP drilling for GreenDrill 2023

**Ice-enabled Winkie Drill**  
5.8 m core under 50 m of ice



IDP drilling for Greendrill 2024



[www.Icedrill.org](http://www.Icedrill.org)



# NSF Ice Drilling Program Education & Outreach featuring *your* science!



- IDP School of Ice for faculty at minority-serving institutions
- IDP Virtual Field Labs for educators
- Educational resources online

Louise Huffman  
IDP Education & Outreach



Contact Louise!!  
[Louise.T.Huffman@Dartmouth.edu](mailto:Louise.T.Huffman@Dartmouth.edu)

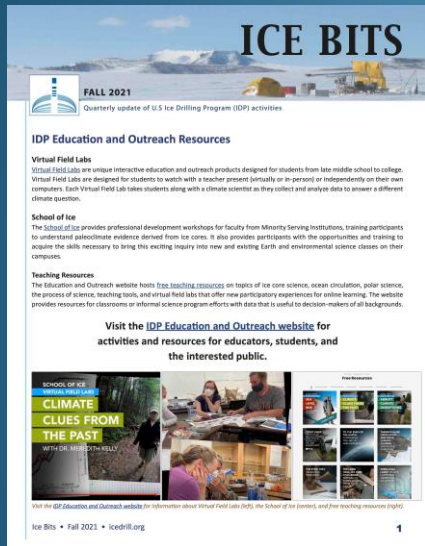
[www.lcedrill.org](http://www.lcedrill.org) and <http://icedrill-education.org/>



# NSF Ice Drilling Program Get involved !



- Sign up for our newsletter!
- Participate in IDP Working Group workshops!
- Make sure your science is in the IDP Long Range Science Plan!
- Get help with outreach for your science!
- Request drilling & EO support for your NSF proposal!



[www.icedrill.org](http://www.icedrill.org)