

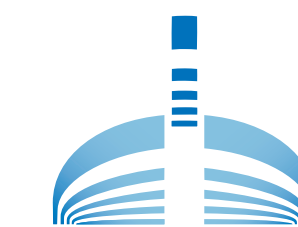
IDP Education and Public Outreach

Louise T. Huffman

Director of Education and Public Outreach, US Ice Drilling Program

louise.t.huffman@dartmouth.edu





IDP Education and Public Outreach Program

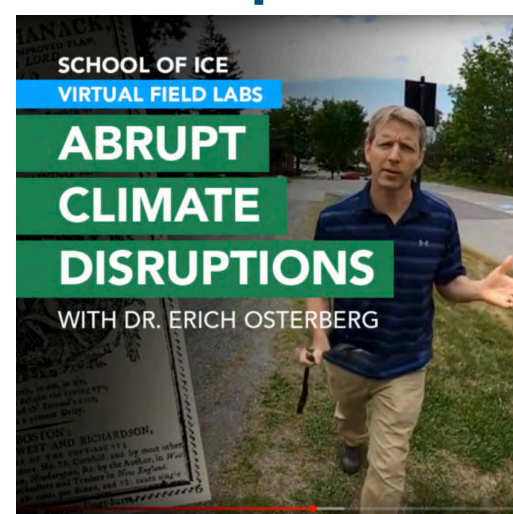
1. Professional Development for Educators—
in collaboration with scientists



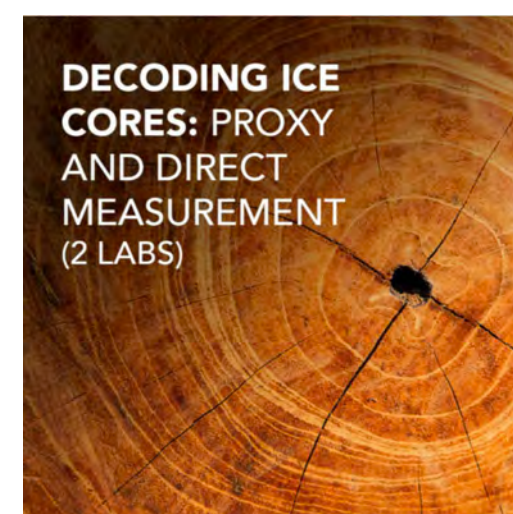
2. Public Outreach-to museums
and community organizations



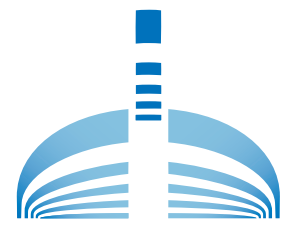
3. Development of Resources Based on Research Results



icedrill-education.org



4. Scientist Broader Impacts
<https://icedrill.org/outreach-support>
louise.t.huffman@dartmouth.edu



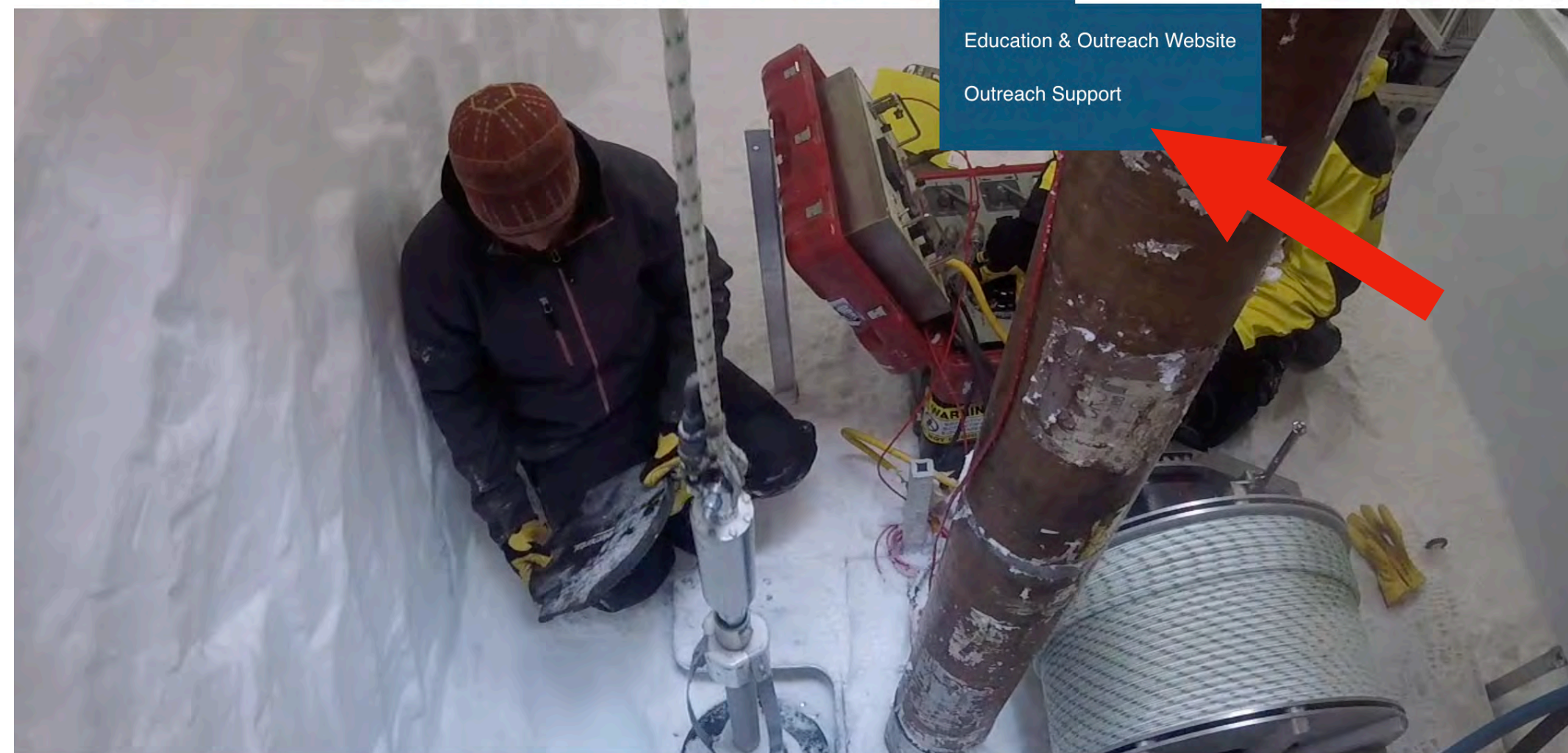
Broader Impacts

Step 1: icedrill.org

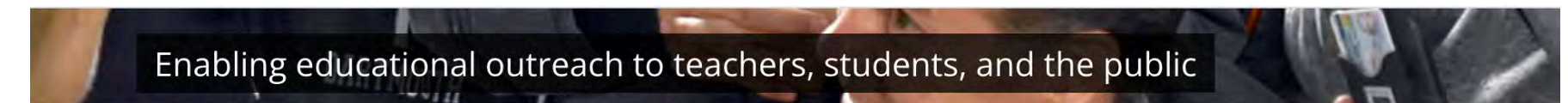
Step 2: Contact Louise early in your proposal preparation



About Equipment Fieldwork Resources News Library Publications Education **Q** Contact Us



Discover IDP



Home / Outreach Support

OUTREACH SUPPORT

The **Education and Outreach program** of IDP fosters diversity through its well-established *IDP School of Ice workshop* for faculty at minority-serving institutions and provides hands-on discovery activities based on ice science to middle-school and secondary school teachers. IDP outreach efforts advanced public literacy by humanizing the face of climate science by engaging community scientists in professional settings with educators through, for example, national conferences of the National Science Teacher Association.

Scientists who seek to include IDP education and outreach activities associated with U.S. ice coring or drilling science projects should contact Louise Huffman at Louise.T.Huffman@Dartmouth.edu during their proposal preparation stage.

Outreach Contact

Louise T. Huffman

Director of Education & Public Outreach
US Ice Drilling Program
Thayer School of Engineering at Dartmouth
14 Engineering Drive
Hanover, NH 03755

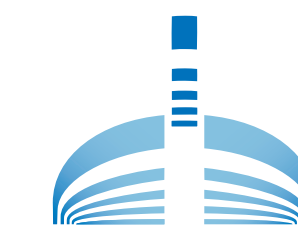
Office: (630) 460-3688

Email: Louise.T.Huffman@dartmouth.edu

Website: <http://icedrill-education.org>

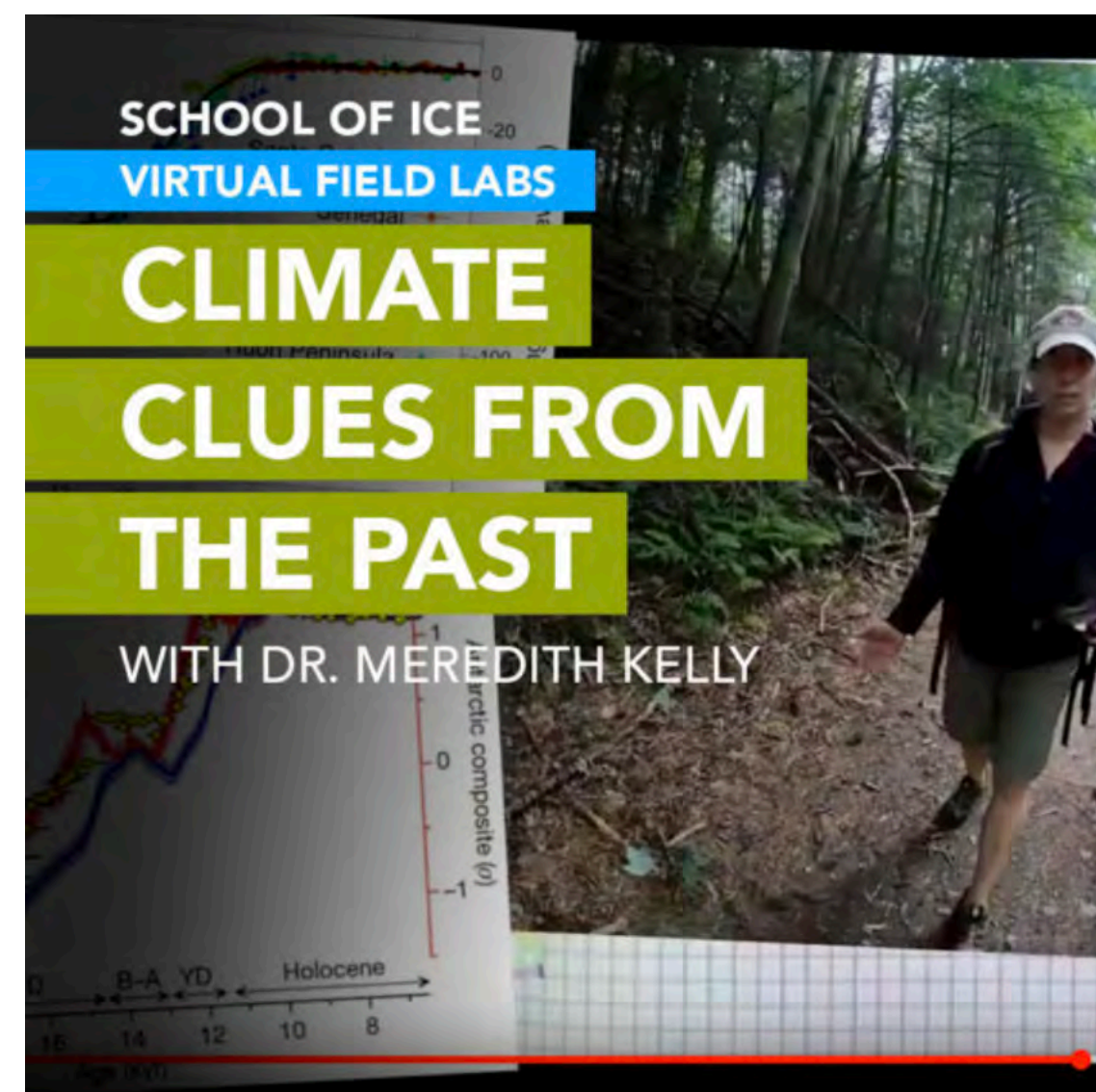
[IDP'S EDUCATION AND OUTREACH PROGRAM WEBSITE](http://icedrill-education.org)



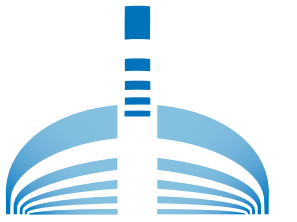


Virtual Field Labs

3-Part Video Series Exploring Climate Questions featuring a Researcher

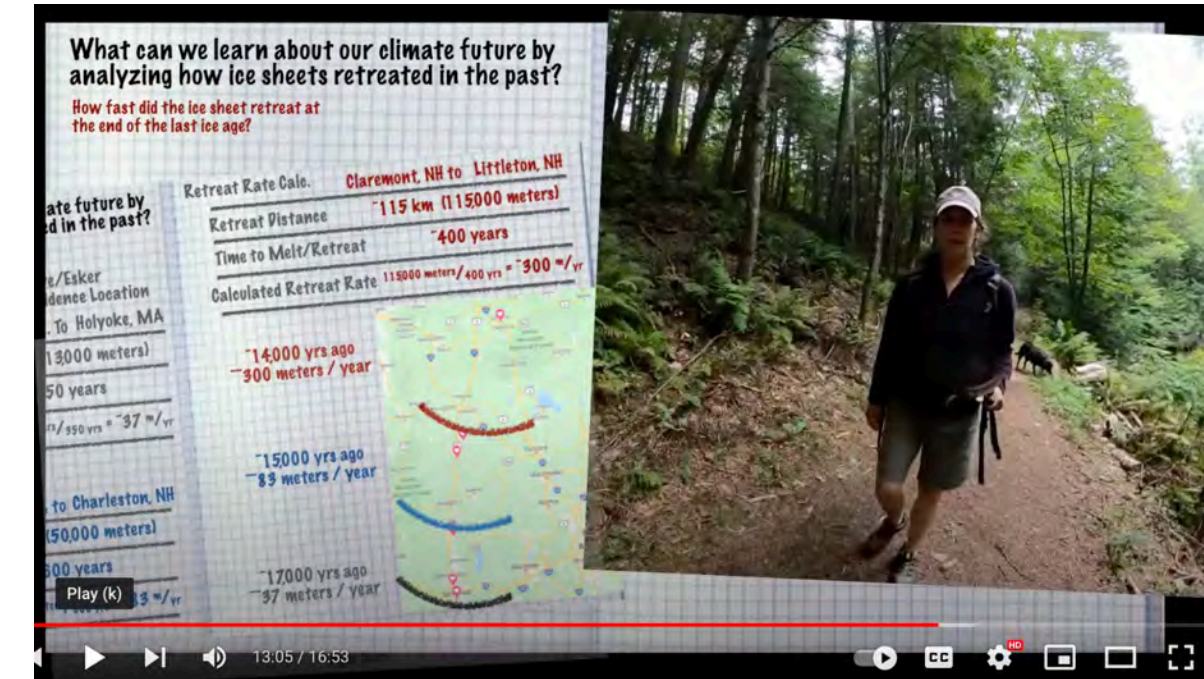


Dr. Dominic Winski, Climate Warnings From Alaska Episode #1-Virtual Field Labs

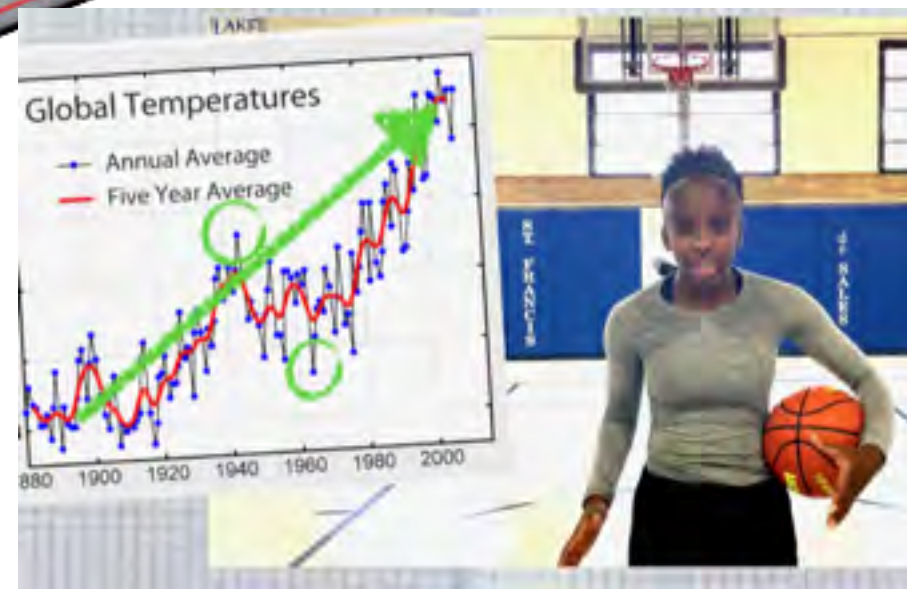


Ron Hale—teacher
Chicago Public Schools

Virtual Field Labs



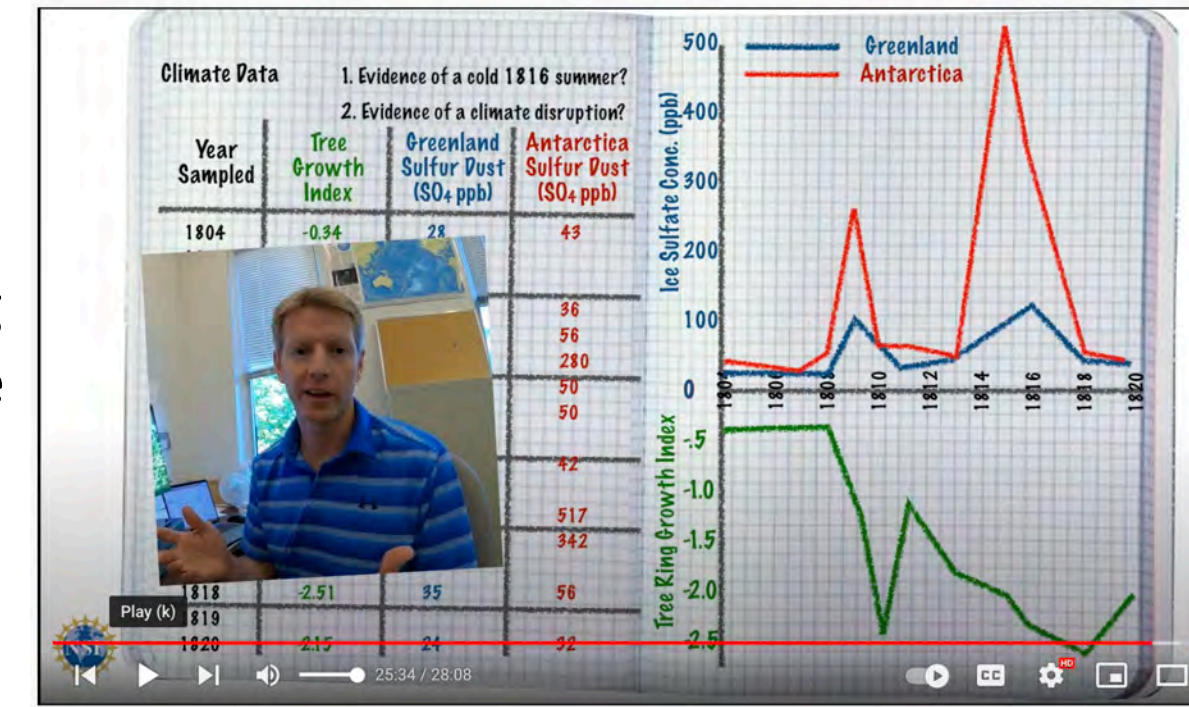
Dr. Meredith Kelly
Dartmouth College



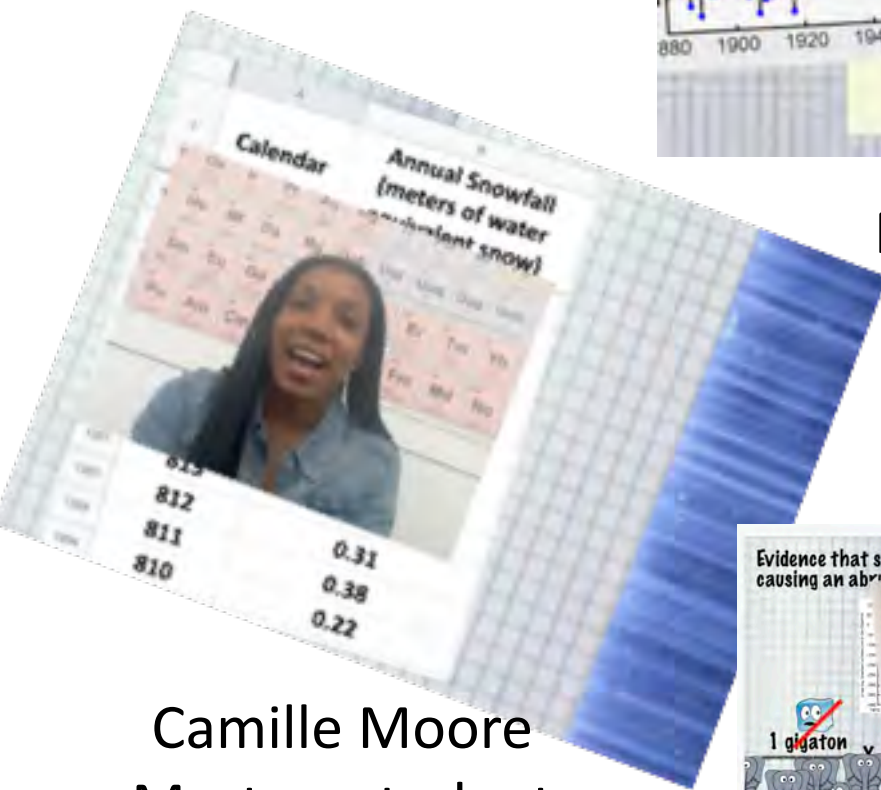
McKale Thompson-student
Washington University
Sustainable Building

- Combines lab and field experiences
- Delivered digitally icedrill-education.org
- Middle school through college
- Independently or teacher-led

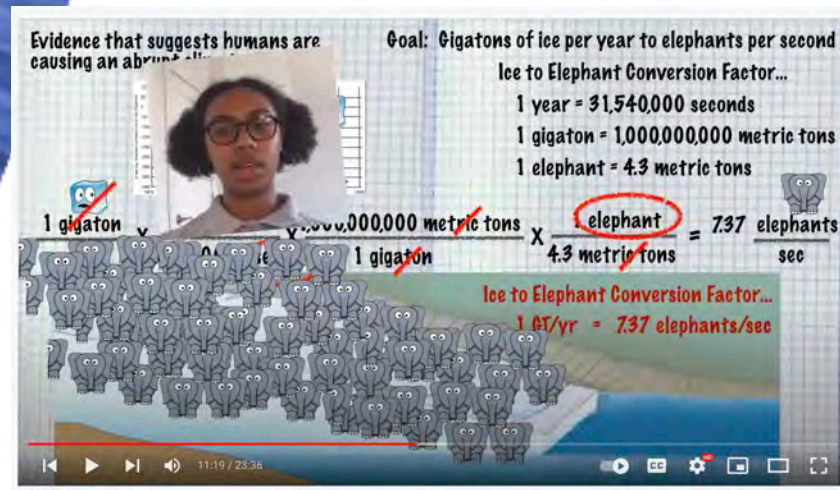
Dr. Erich Osterberg
Dartmouth College



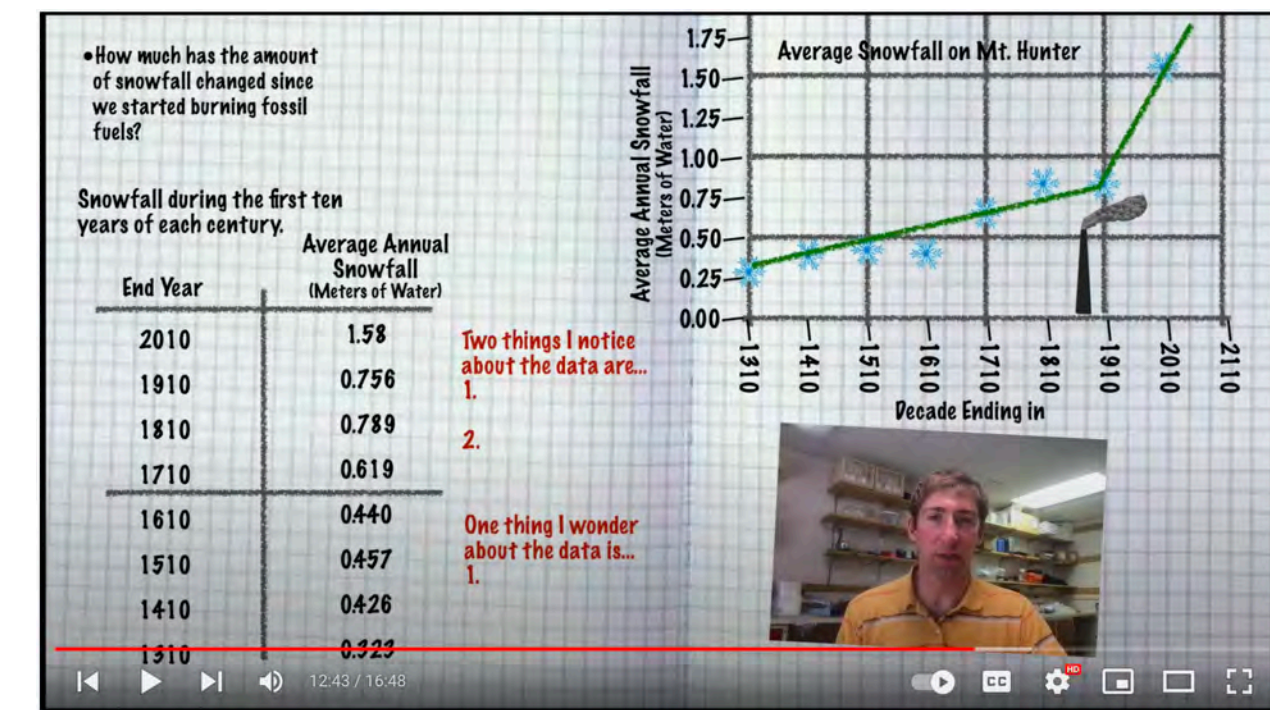
- Three-part series: 1. Intro/Question; 2. Data Collection/analysis; 3. (So what?) Relationship to future
- Led by scientists
- Diverse presenters
- Student engagement throughout



Camille Moore
Masters student
Georgetown University
Environmental Science



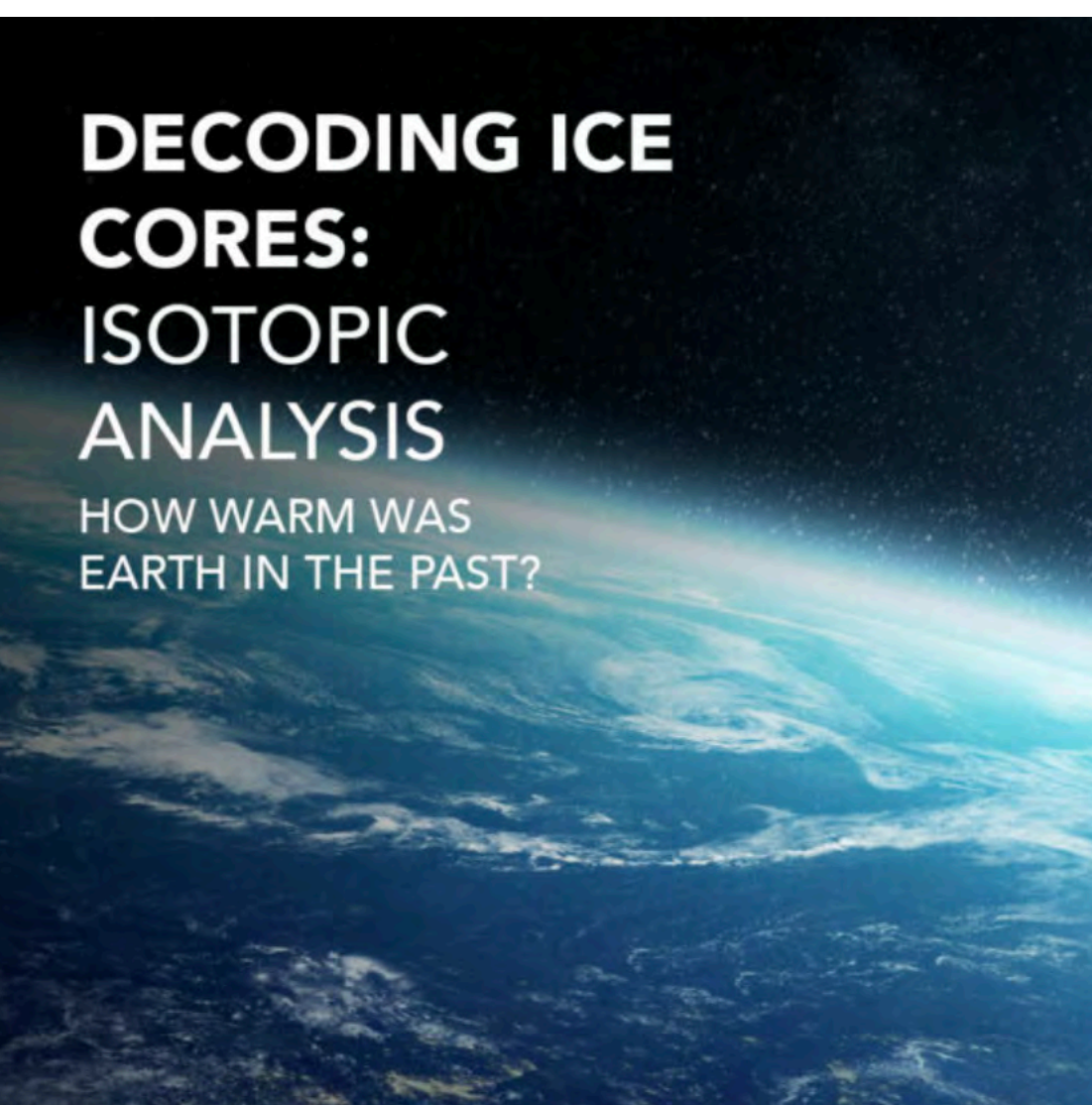
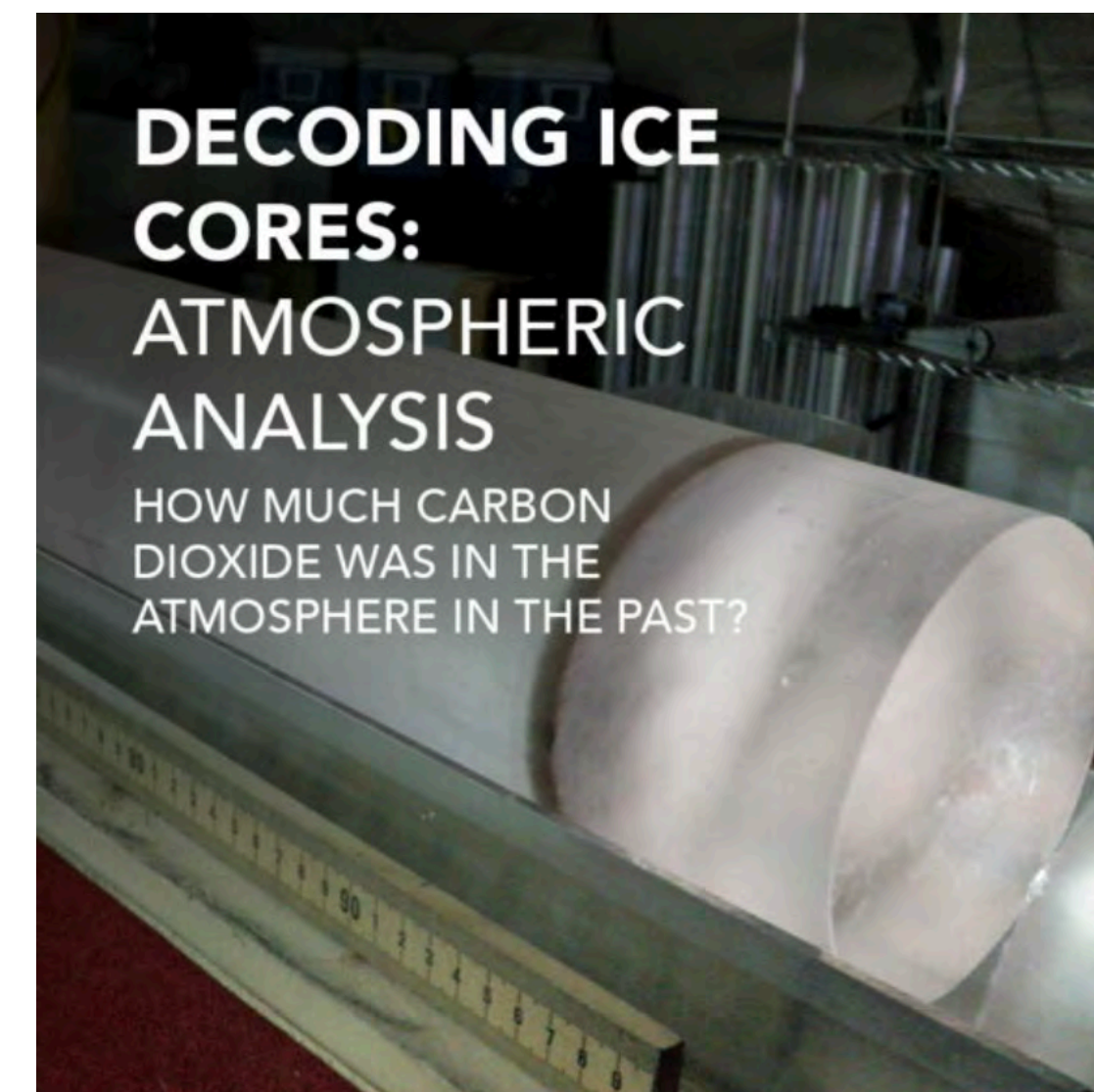
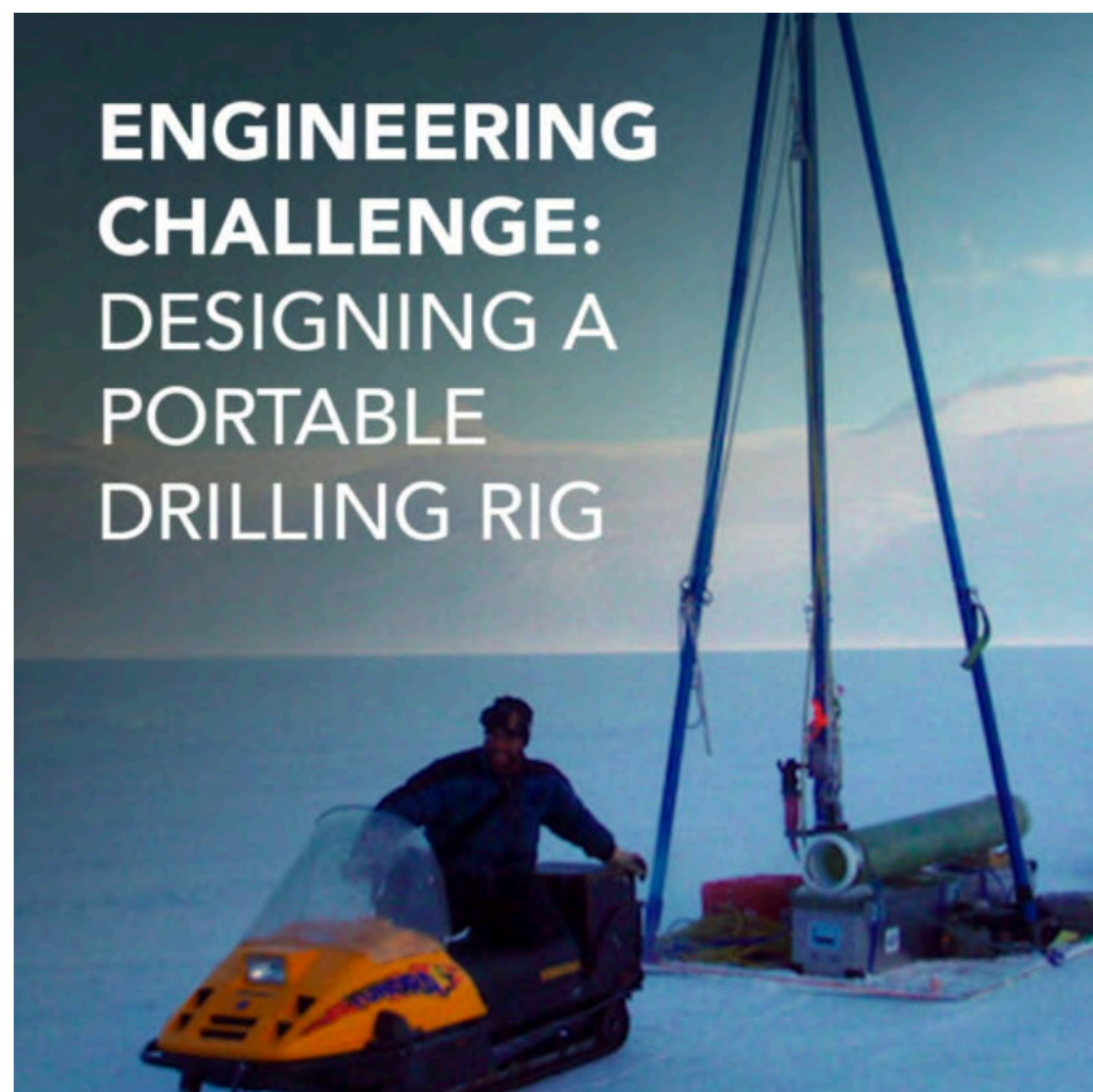
Leila Winn
Student
NY University



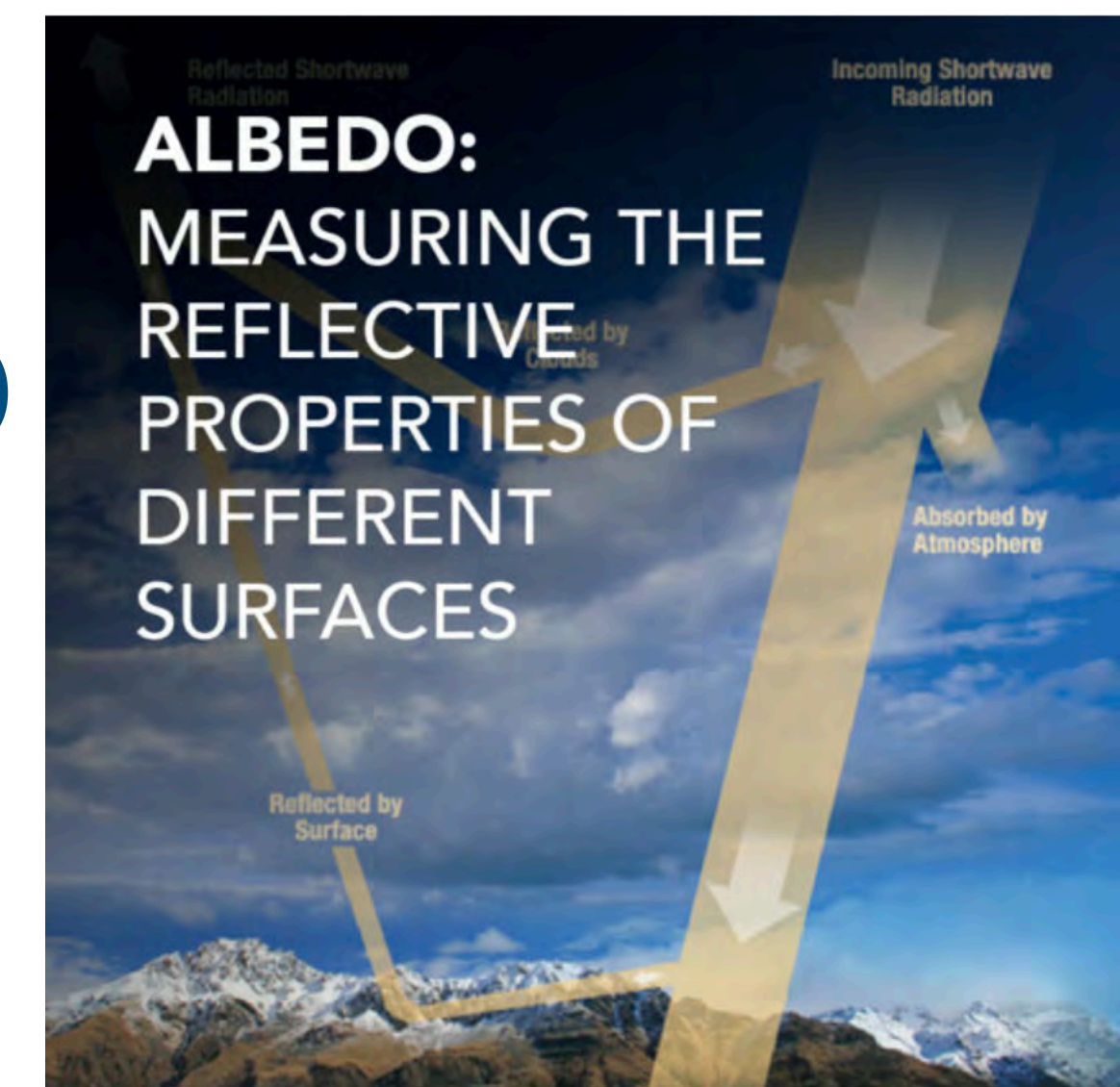
Dr. Dom Winski
University of Maine

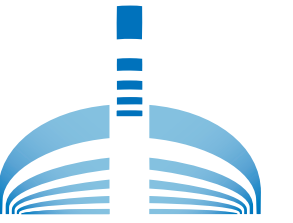


Classroom Labs and Activities



1. Based on current science research
2. Use easily obtained materials
3. Aligned with Next Generation Science Standards (NGSS)
4. Entry level —can be used from middle school to college
5. Inquiry based/hands—on





Public Outreach

Grad students helped at Montshire Science Museum, Vermont



Public Event at Geology Museum at Rutgers

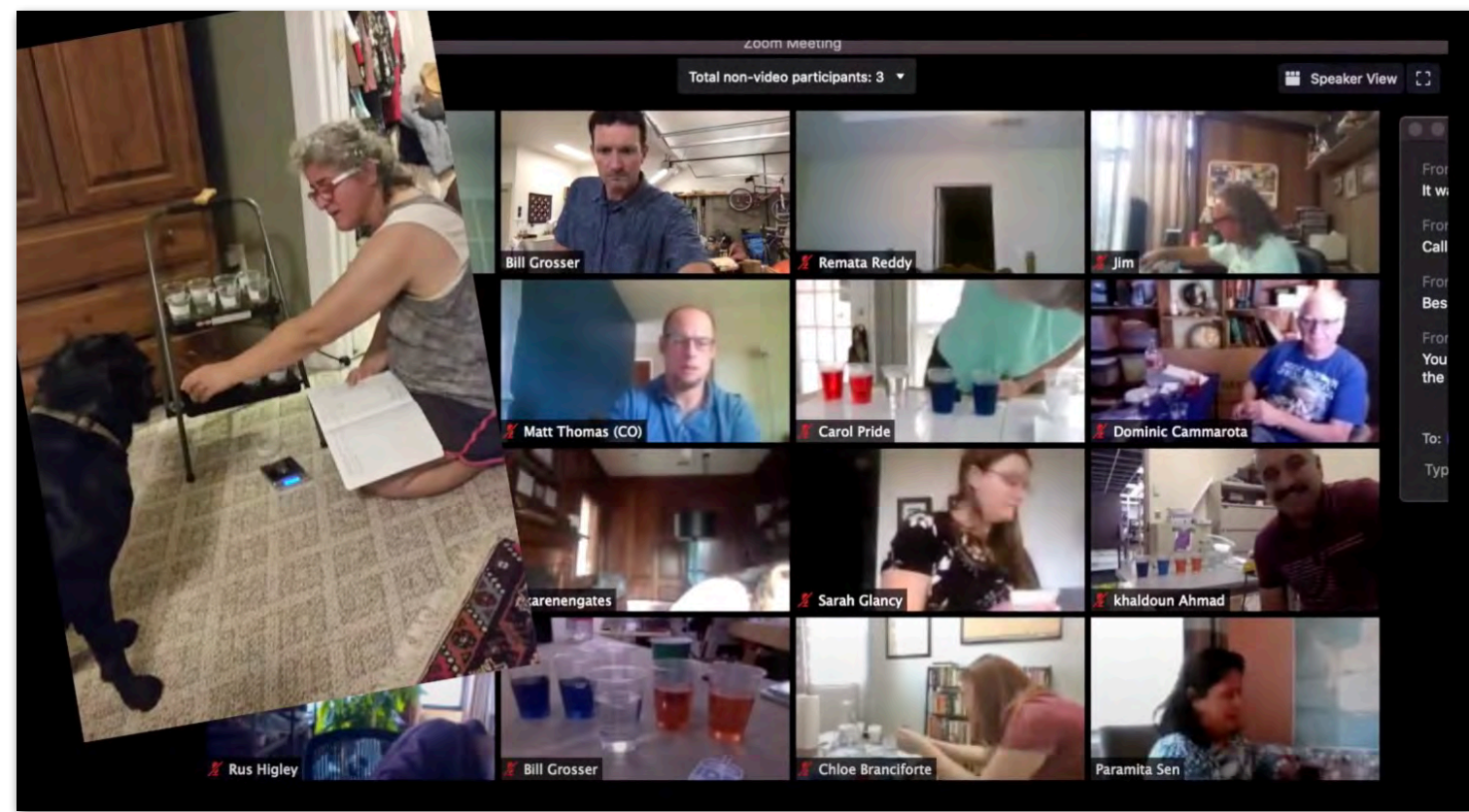


Women's Club in Naples, FL

Ted X Mile High Event—Partnered with NSF ICF

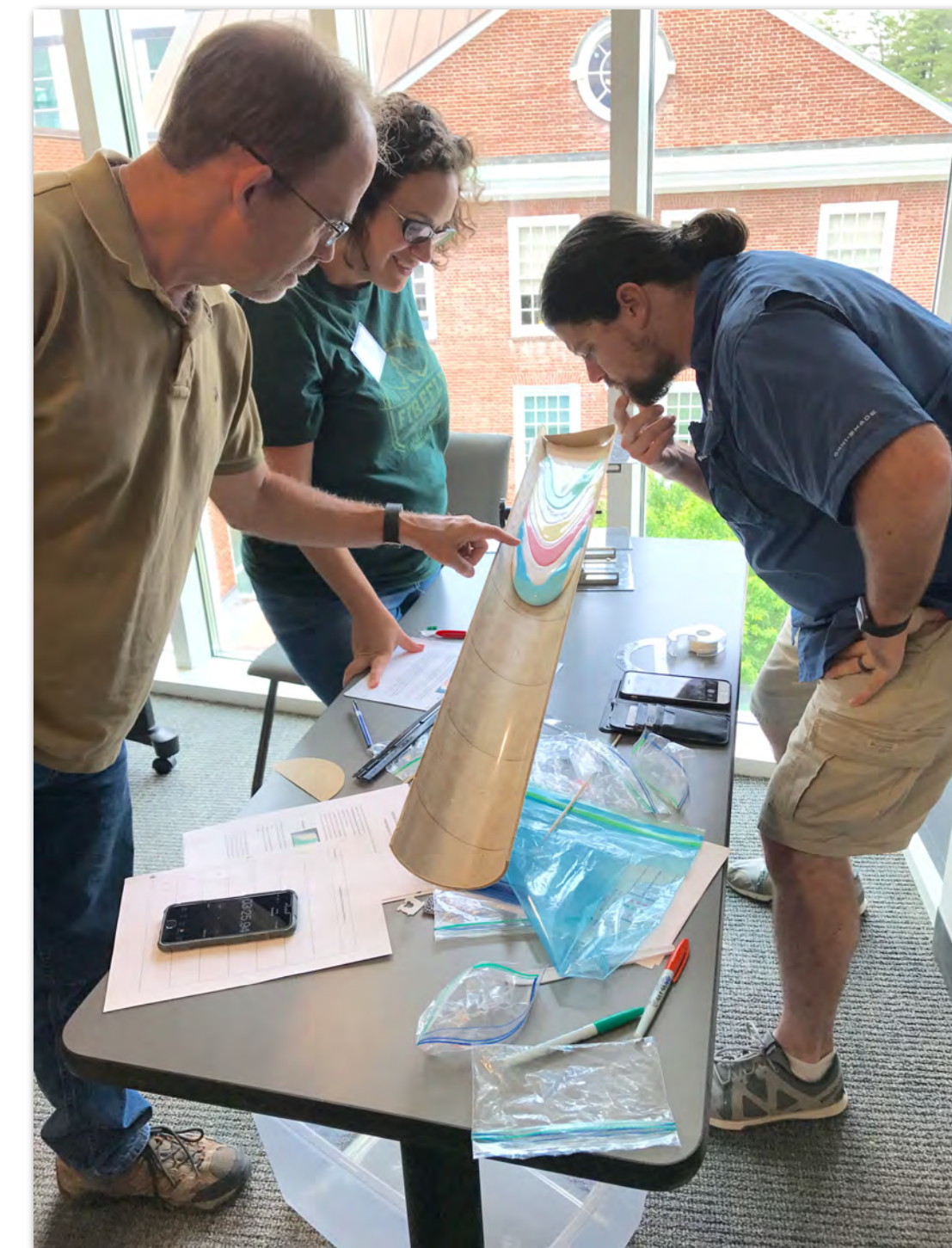


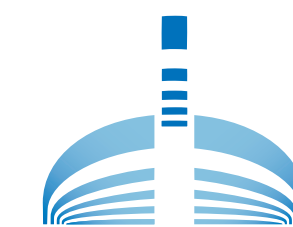
Winter Science Event at Science Museum of Orlando



School of Ice

Professional Development for Faculty at Minority Serving Institutions





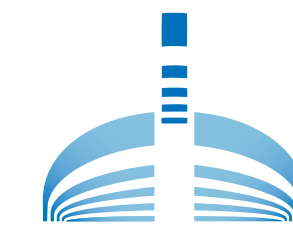
Schools of Ice 2022

June 26-30, 2022 Dartmouth,
Hanover, NH

August 7-11, 2022 COLDEX-OSU,
Corvallis, OR

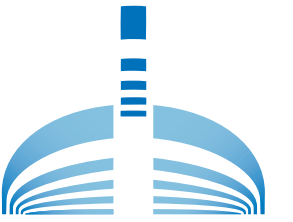


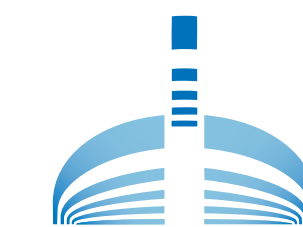
Please advertise to colleagues
icedrill-education.org/school-of-ice/



How can the IDP EPO help you meet your broader impacts?

**QUESTIONS
or
Suggestions?**





Professional Development K-12



Golden Apple



NSTA



AGU-GIFT